

TECHNICAL SPECIFICATIONS:

- 5" RAINDROP Water Lubricated Submersible Motors are rewindable.
- Coupling dimensions as per NEMA standard.
- Winding wire : Polywrapped / PVC winding available on specific demand
- Degree of protection : IP68.
- Max water temperature : 35°C.
- Starts per hour : 20 time (Max.).
- Allowable voltage variation : +6% - 10%.
- Motor shaft of Stainless steel.
- Stator shell of Stainless steel.
- Max depth immersion : 350 M.
- Mounting : vertical / horizontal.
- Motor Cable length : 3 Meter / 3 Core with separate earth cable & 4 Core.
- Cooling Flow : V:0.2 M/S.
- Coolant : Clear Water.

VERSIONS:

Three Phase: 1.1 kw to 9.3 kw / 380-415 Volt /50 Hz

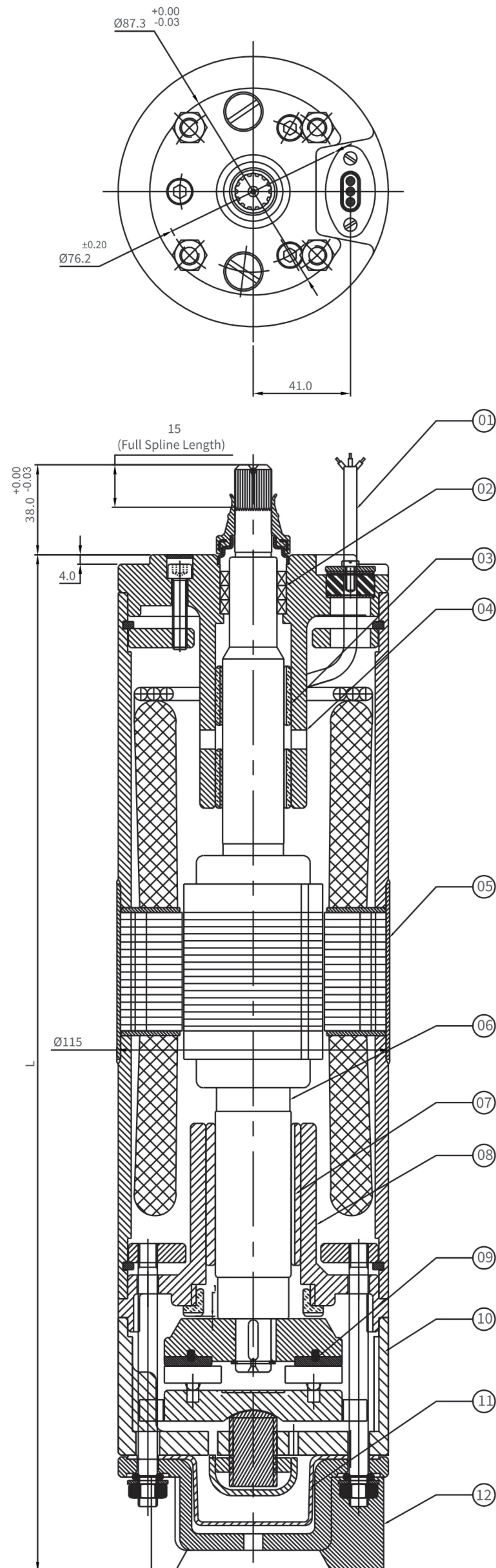
2.2 kw to 9.3 kw / 380-460 Volt /60 Hz.

Motor With Other Voltage and frequency ratings are available on specific Demand.

Submersible Motor

5" SUBMERSIBLE MOTORS (RE-WINDABLE)

5" Rewindable Motor Design



| SR NO. | PART'S NAME | MATERIAL |
|--------|---------------------|-----------------------|
| 01 | CABLE 3 CORE/4 CORE | EPR |
| 02 | OIL SEAL | N.B.R |
| 03 | BEARING BUSH | L.T.B-4 2%NI |
| 04 | UPPER HOUSING | CL.(FG-200) / S.S.304 |
| 05 | MOTOR PIPE | STAINLESS STEEL |
| 06 | ROTOR SHAFT | S.S.420 |
| 07 | BEARING BUSH | L.T.B-4 2%NI |
| 08 | LOWER HOUSING | CL.(FG-200) |
| 09 | THRUST BEARING SET | CARBON / S.S 420 |
| 10 | LOWER PART -2 | CL.(FG-200) |
| 11 | PRESSURE CUP | N.B.R |
| 12 | MOTOR BASE | C.I (F.G 200) |
| 13 | ALL HARDWARE | S.S.304 |

| PN | | PW L [mm C.I | Motor Weight [kg] | Motor Weight (incl.pkg)[kg] |
|------|---------------|---------------------|-----------------------|---------------------------------|
| [kW] | [HP] (S.P) | | | |
| 1.10 | 1.50 | 520.00 | 21.9 | 23.9 |
| 1.50 | 2.00 | 540.00 | 22.8 | 24.8 |
| 2.20 | 3.00 | 580.00 | 24.5 | 26.5 |
| 2.94 | 4.00 | 665.00 | 28.2 | 30.2 |
| 3.70 | 5.00 | 665.00 | 28.2 | 30.2 |
| 4.40 | 6.00 | 705.00 | 29.9 | 31.9 |
| 5.50 | 7.50 | 815.00 | 34.6 | 36.6 |

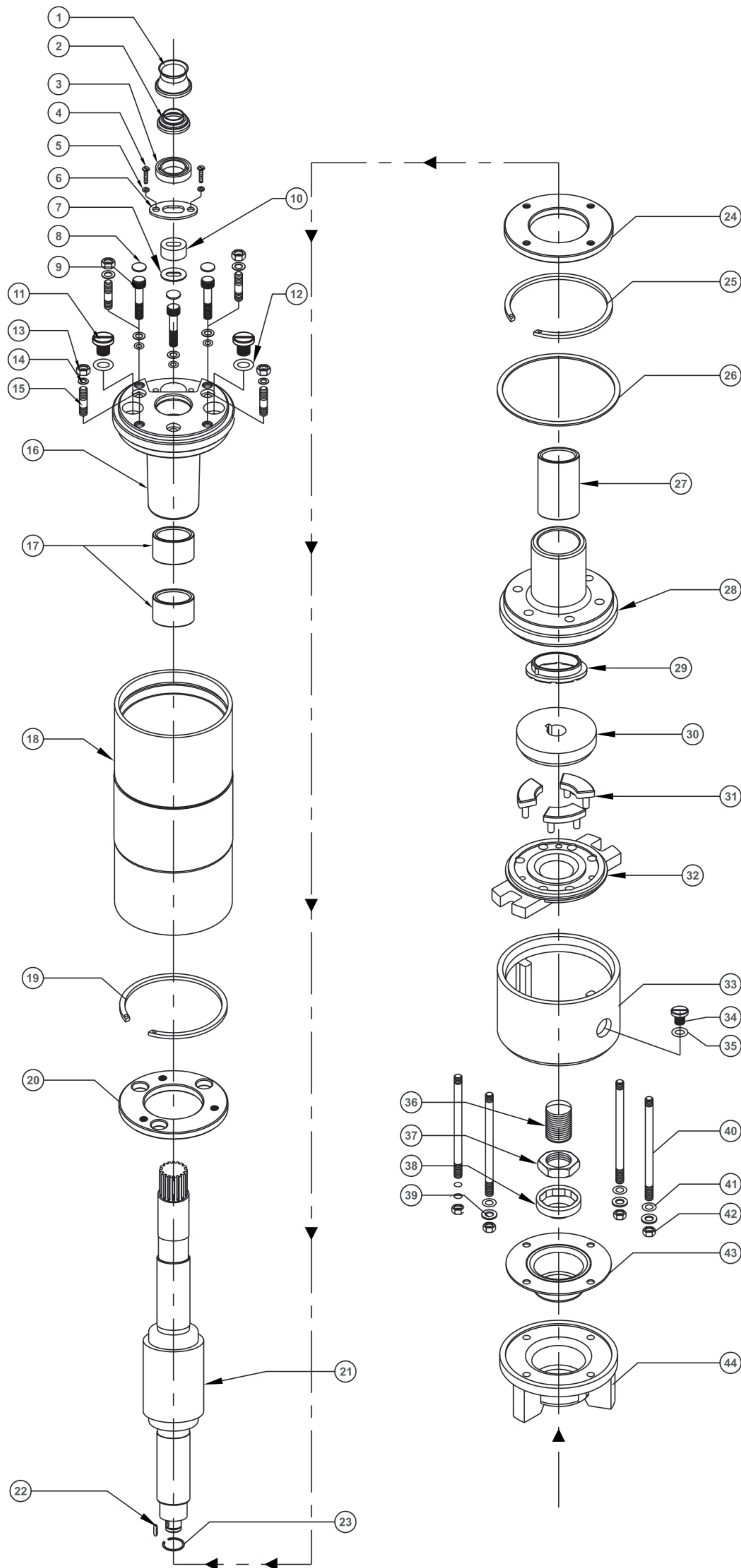
| PN | | PW L [mm C.I | Motor Weight [kg] | Motor Weight (incl.pkg)[kg] |
|------|---------------|---------------------|-----------------------|---------------------------------|
| [kW] | [HP] (T.P) | | | |
| 1.50 | 2.00 | 545.00 | 23.0 | 25.0 |
| 2.20 | 3.00 | 565.00 | 23.9 | 25.9 |
| 2.94 | 4.00 | 565.00 | 23.9 | 25.9 |
| 3.70 | 5.00 | 590.00 | 25.0 | 27.0 |
| 4.40 | 6.00 | 630.00 | 26.7 | 28.7 |
| 5.50 | 7.50 | 695.00 | 29.5 | 31.5 |
| 7.50 | 10.00 | 815.00 | 34.6 | 36.6 |
| 9.30 | 12.50 | 880.00 | 37.3 | 39.3 |

Performance Data of 5" Rewindable Aqualite Submersible Motors / 50 Hz

| PN | | Thrust F [N] | UN [V] | nN [min-1] | IN [A] | IA [A] | η(Eff.) [%] at % load | | | COS φ (PF) At % load | | | TN [Nm] | TA [Nm] |
|--------|------|-----------------|-----------|---------------|-----------|-----------|--------------------------|----|-----|-------------------------|------|------|------------|------------|
| [H.P.] | [kW] | | | | | | 50 | 75 | 100 | 50 | 75 | 100 | | |
| 1.50 | 1.10 | 4000 | 380 | 2860 | 3.20 | 15.0 | 68 | 71 | 71 | 0.62 | 0.70 | 0.71 | 3.69 | 9.22 |
| | | | 400 | 2870 | 3.30 | 15.7 | 67 | 71 | 72 | 0.60 | 0.67 | 0.72 | 3.67 | 9.35 |
| | | | 415 | 2870 | 3.40 | 16.3 | 65 | 70 | 72 | 0.55 | 0.65 | 0.72 | 3.67 | 9.60 |
| 2.00 | 1.50 | 4000 | 380 | 2860 | 4.10 | 19.5 | 70 | 72 | 73 | 0.60 | 0.70 | 0.78 | 4.91 | 11.80 |
| | | | 400 | 2865 | 4.20 | 20.2 | 66 | 72 | 73 | 0.55 | 0.66 | 0.77 | 4.90 | 11.85 |
| | | | 415 | 2870 | 4.30 | 20.6 | 66 | 70 | 72 | 0.52 | 0.62 | 0.75 | 4.89 | 11.93 |
| 3.00 | 2.20 | 15500 | 380 | 2865 | 6.00 | 21.0 | 68 | 69 | 72 | 0.66 | 0.70 | 0.70 | 7.36 | 13.25 |
| | | | 400 | 2870 | 6.15 | 21.8 | 67 | 68 | 71 | 0.65 | 0.70 | 0.69 | 7.34 | 13.60 |
| | | | 415 | 2875 | 6.25 | 22.5 | 66 | 67 | 70 | 0.64 | 0.69 | 0.68 | 7.33 | 13.90 |
| 4.00 | 3.00 | 15500 | 380 | 2860 | 9.00 | 31.5 | 70 | 70 | 72 | 0.65 | 0.70 | 0.72 | 9.83 | 17.70 |
| | | | 400 | 2875 | 9.20 | 32.8 | 69 | 70 | 72 | 0.64 | 0.69 | 0.70 | 9.78 | 18.00 |
| | | | 415 | 2875 | 9.30 | 33.6 | 69 | 68 | 71 | 0.64 | 0.69 | 0.69 | 9.78 | 18.40 |
| 5.50 | 4.00 | 15500 | 380 | 2870 | 10.20 | 35.7 | 70 | 70 | 72 | 0.68 | 0.70 | 0.73 | 13.47 | 24.90 |
| | | | 400 | 2875 | 10.40 | 37.0 | 69 | 70 | 71 | 0.66 | 0.69 | 0.71 | 13.44 | 25.00 |
| | | | 415 | 2875 | 10.60 | 37.4 | 69 | 68 | 71 | 0.65 | 0.70 | 0.71 | 13.44 | 25.54 |
| 7.50 | 5.50 | 15500 | 380 | 2875 | 13.40 | 46.9 | 71 | 72 | 73 | 0.70 | 0.71 | 0.75 | 18.33 | 34.80 |
| | | | 400 | 2880 | 13.20 | 46.9 | 70 | 69 | 72 | 0.69 | 0.70 | 0.75 | 18.30 | 35.90 |
| | | | 415 | 2885 | 13.10 | 47.2 | 70 | 70 | 72 | 0.69 | 0.70 | 0.74 | 18.27 | 36.50 |
| 10.0 | 7.50 | 15500 | 380 | 2880 | 18.10 | 63.4 | 70 | 72 | 74 | 0.72 | 0.74 | 0.75 | 24.40 | 46.40 |
| | | | 400 | 2885 | 17.50 | 63.9 | 70 | 73 | 75 | 0.71 | 0.72 | 0.75 | 24.36 | 46.77 |
| | | | 415 | 2885 | 17.50 | 64.0 | 69 | 70 | 73 | 0.70 | 0.72 | 0.74 | 24.36 | 47.80 |
| 12.5 | 9.30 | 15500 | 380 | 2880 | 20.50 | 73.0 | 72 | 72 | 74 | 0.74 | 0.74 | 0.75 | 30.50 | 57.90 |
| | | | 400 | 2885 | 20.40 | 74.5 | 71 | 73 | 75 | 0.72 | 0.72 | 0.75 | 30.45 | 58.50 |
| | | | 415 | 2885 | 20.20 | 74.7 | 70 | 71 | 73 | 0.70 | 0.71 | 0.74 | 30.45 | 59.40 |

- PN - Rated Output
- UN - Rated Voltage
- nN - RPM
- IN - Full Load Current
- IA - Starting Current
- η - Motor Efficiency
- cosφ - Power Factor
- TN - Full Load Torque
- TA - Starting Torque
- F[N] - Axial Thrust Load

Exploded View of Spare Parts of Motors



| No. | Part's Name |
|-----|-------------------------|
| 1 | Sand Guard |
| 2 | Upper Cap |
| 3 | Oil Seal |
| 4 | Cable Clip Screw |
| 5 | Cable Clip Screw Washer |
| 6 | Cable Clip |
| 7 | Cable Grommet Washer |
| 8 | Allen Bolt Cap |
| 9 | Allen Bolt |
| 10 | Cable Grommet |
| 11 | Drain Plug |
| 12 | Drain Plug 'o' Ring |
| 13 | Hex Nut |
| 14 | Upper Stud Washer |
| 15 | Upper Stud |
| 16 | Upper Housing |
| 17 | Bearing Bush |
| 18 | Stator Body |
| 19 | Cir Clip |
| 20 | Upper Flange |
| 21 | Rotor |
| 22 | Rotor Key |
| 23 | Rotor Cir Clip |
| 24 | Lower Flange |
| 25 | Cir Clip |
| 26 | Paper Gasket |
| 27 | Bearing Bush |
| 28 | Lower Housing |
| 29 | C.T Bearing |
| 30 | Carbon Bearing |
| 31 | Segment |
| 32 | Counter |
| 33 | Lower Part-2 |
| 34 | Drain Plug |
| 35 | Drain Plug 'o' Ring |
| 36 | Rocker |
| 37 | Rocker Lock Nut |
| 38 | Rocker Lock Nut Cap |
| 39 | Stud Washer |
| 40 | Lower Stud |
| 41 | Stud 'O' Ring |
| 42 | Hex Nut |
| 43 | Pressure Cup |
| 44 | Motor Base |