

TECHNICAL SPECIFICATIONS:

- 9" RAINDROP Water Lubricated Submersible Motors are rewindable.
- Coupling dimensions: 8" NEMA standard.
- Winding wire: PVC winding
- Degree of protection : IP68.
- Max water temperature : 35°C.
- Starts per hour : 20 time (Max.).
- Allowable voltage variation : +6% - 10%.
- Motor shaft of Stainless steel.
- Stator shell of Stainless steel.
- Max depth immersion : 350 M.
- Mounting : vertical
- Motor Cable length : 3 Meter / 3 Core with separate earth cable.
- Cooling Flow : V:0.2 M/S.
- Coolant : Clear Water.

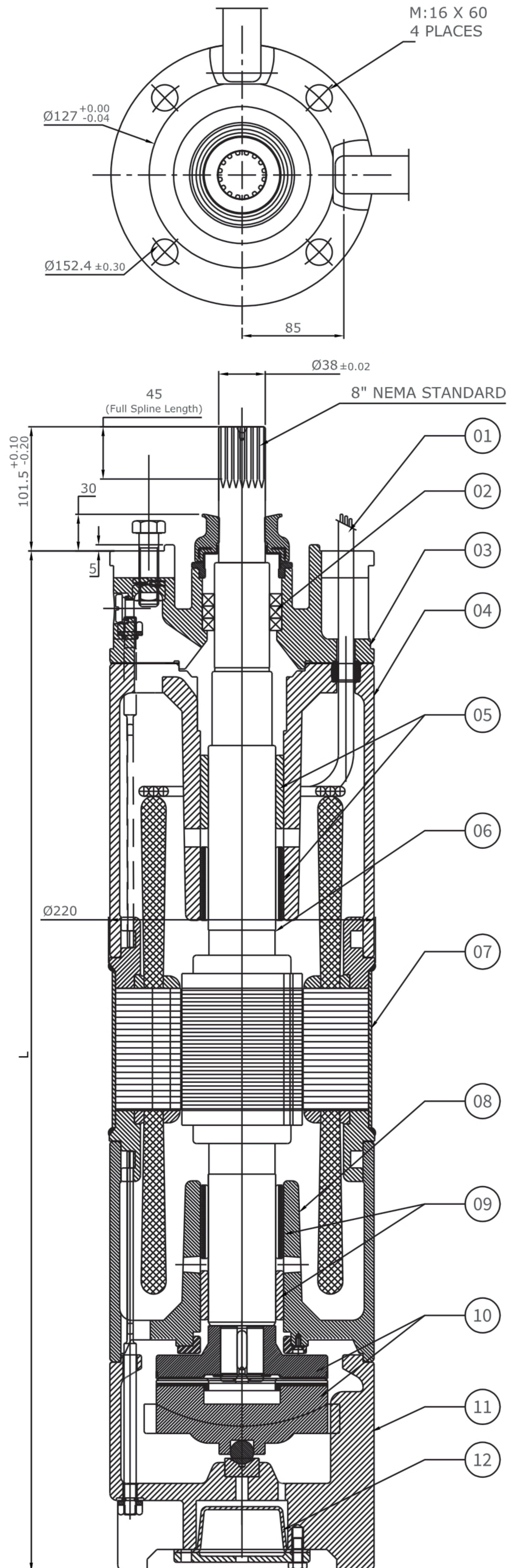
VERSIONS:

Three Phase: 45 kW To 93 kW / 380-415 Volt /50 Hz

Motor With Other Voltage and frequency ratings are available on specific Demand.

Submersible Motor

9" SUBMERSIBLE MOTORS (RE-WINDABLE)



9" Rewindable Motor Design

SR NO.	PART'S NAME	MATERIAL
01	CABLE 3 CORE /4 CORE	EPR
02	OIL SEAL	N.B.R
03	ADAPTOR	CI.(FG-200)
04	UPPER HOUSING	CI.(FG-200)
05	BEARING BUSH	CARBON
06	ROTOR SHAFT	S.S.420
07	MOTOR PIPE	STAINLESS STEEL
08	LOWER HOUSING	CI.(FG-200)
09	BEARING BUSH	CARBON
10	THRUST BEARING SET	CARBON / S.S.410
11	MOTOR BASE	CI.(FG-200)
12	PRESSURE CUP	N.B.R
13	ALL HARDWARE	S.S.316

P N		PW L [mm] Cast Iron	MOTOR WEIGHT [kg] Cast Iron	MOTOR WEIGHT (incl.pkg) [kg] Cast Iron
[kW]	[HP]			
45.0	60.00	1235.0	165.0	183.0
52.5	70.00	1355.0	262.0	342.0
55.0	75.00	1355.0	262.0	342.0
64.0	85.00	1435.0	290.0	375.0
66.2	90.00	1435.0	290.0	375.0
75.0	100.0	1505.0	300.0	360.0

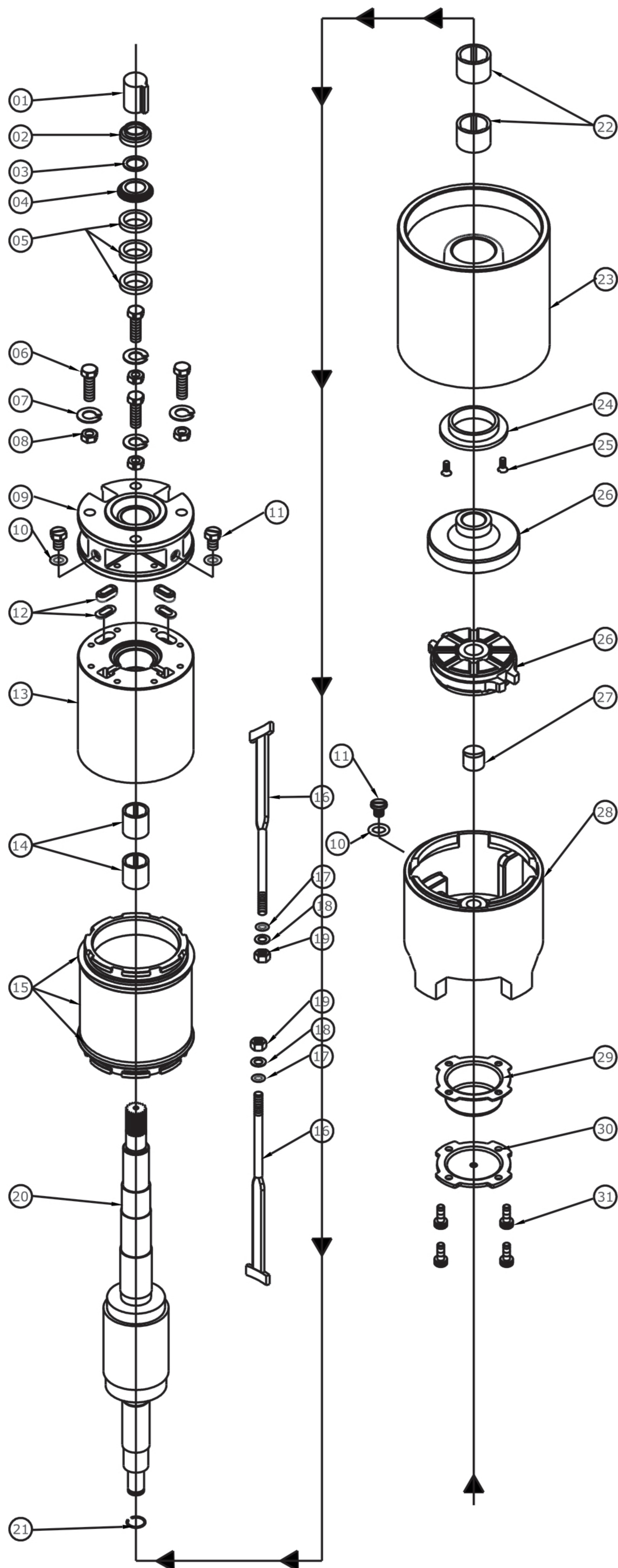
* 125 H.P ON DEMAND

Performance Data of 9" Standard Rewindable Submersible Motors / 50 Hz

PN		Thrust Load [N]	UN [V]	nN [min-1]	IN [A]	IA [A]	η (Eff.) [%] at % load			cos φ (PF) at % load			TN [Nm]	TA [Nm]
[H.P.]	[kW]						50	75	100	50	75	100		
60	45	45000	380	2905	93.1	490	86.0	86.2	85.3	0.80	0.87	0.89	155	219
			400	2915	90	520	85.5	86.4	85.9	0.75	0.84	0.87	154	241
			415	2920	88	540	84.8	86.3	85.7	0.70	0.80	0.85	154	262
70	52	45000	380	2905	106.9	574	86.4	86.8	85.4	0.82	0.86	0.87	181	284
			400	2915	103	608	86.2	87.2	86.1	0.75	0.84	0.85	180	317
			415	2920	101	632	85.8	87.1	86.8	0.72	0.81	0.84	180	346
75	55	45000	380	2910	114	624	86.8	87.0	85.6	0.79	0.85	0.89	193	301
			400	2915	110	660	85.9	86.9	86.3	0.73	0.83	0.87	193	341
			415	2920	108	687	84.9	87.1	86.1	0.66	0.79	0.86	193	367
80	60	45000	380	2910	121	698	87.3	87.5	86.6	0.82	0.86	0.88	206	320
			400	2920	116	724	86.8	87.6	87.1	0.78	0.83	0.86	205	356
			415	2925	115	767	86.2	87.5	87.0	0.74	0.81	0.89	205	387
90	67	45000	380	2905	137	759	87.1	87.6	86.5	0.80	0.87	0.89	232	352
			400	2915	133	796	86.4	87.4	86.8	0.75	0.83	0.87	232	394
			415	2920	130	827	85.6	87.1	86.6	0.68	0.80	0.84	231	426
100	75	45000	380	2905	153	891	86.8	87.2	85.8	0.78	0.85	0.88	258	420
			400	2920	148	942	86.2	87.4	86.8	0.75	0.84	0.85	257	471
			415	2915	146	983	85.5	86.8	86.5	0.68	0.78	0.84	257	511
125	93	45000	380	2905	187	1185	87.9	88.5	87.7	0.78	0.84	0.87	305	558
			400	2915	182	1275	87.3	88.4	87.8	0.72	0.82	0.86	304	627
			415	2925	183	1309	86.3	87.7	87.6	0.66	0.77	0.84	304	677

- PN - Rated Output
- F[N] - Axial Thrust Load
- UN - Rated Voltage
- nN - RPM
- IN - Full Load Current
- IA - Starting Current
- η - Motor Efficiency
- cosφ - Power Factor
- TN - Full Load Torque
- TA - Starting Torque

Exploded View of Spare Parts of Motors



Sr. No.	Part's Name
01	Rotor Cap
02	Sand Guard
03	Teflon Washer
04	Upper Cap
05	Oil Seal
06	Hex Bolt
07	Spring Washer
08	Hex Nut
09	Adaptor
10	Drain Plug 'o' Ring
11	Drain Plug
12	Grommet & Washer
13	Upper Housing
14	Bearing Bush
15	Stator Body Finish Flange (use For Upper & Lower Side)
16	T-bolt(upper Side) T-bolt(lower Side)
17	T-bolt 'o'ring
18	T-bolt Washer
19	Nylock Nut
20	Rotor Finish
21	Cir Clip(Use For Rotor)
22	Bearing Bush
23	Lower Housing
24	C.t Bearing
25	C.s.k Screw
26	Counter Bearing
27	Fix Rocker
28	Motor Base
29	Pressure Cup
30	Motor Base Plate
31	Hex Bolt